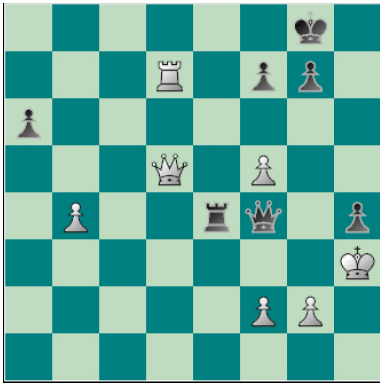


1) Difficulty Level: Easy



Black to Move and Mate in 2

1. ... Re3+
2. fxe3 Qg3#

2) Difficulty Level: Easy



Black to Move and Win

1. ... Qb2

3) Difficulty Level: Moderate



Black to Move and Mate in 3

1. ... Qxe3+
2. Qxe3 Rd1+
3. Kf2 Rf1#

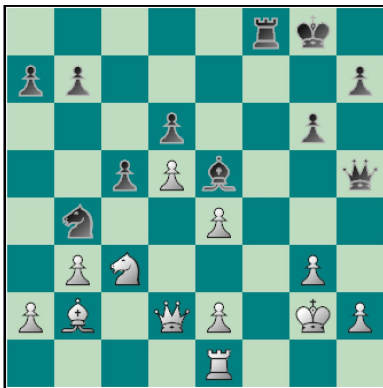
4) Difficulty Level: Moderate



White to Move and Mate

1. Qxb4 Rxb4
2. Rc8+ Ng8 (Nxc8 3. Re8# is not best)
3. Rxg8+

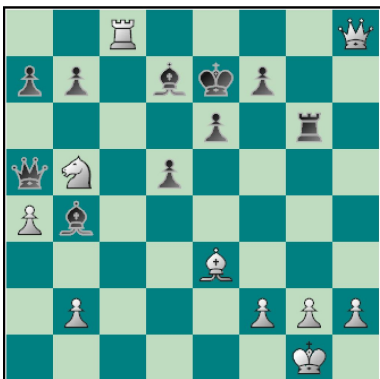
5) Difficulty Level: Hard



Black to Move and Mate

1. ... Rf2+
2. Kxf2 Qxh2+
3. Kf1 Qh3+
4. Kg1 Qxg3+
5. Kf1 Qh3+ (Kg1 Bh2+ Kf2 Qg3+ Kf1 Qg1#)

6) Difficulty Level: Hard



White to Move and Mate

1. Bb6 Qxb6
2. Qh4+ Rf6 (2. ... f6 3. Qh7+ ... is also correct.)
3. Qxb4+